

# YOUR FIRE

WINTER STORIES #

## TRENDS

High energy efficiency houses: the project by Claesson Koivisto Rune Studio.

## DESIGNS

More space for your family with a new 100% environmentally compatible living room.

## STORIES

When fire creates a sense of home. Even at work.





2.

# WHY WE LOVE FIRE

## Leader

We love fire because it is nature, renewable energy, because it brings people together, it creates a unique atmosphere, it tells of a *slower pace of life*, less hectic, which reminds us a bit of the past.

In 2013 we launched a space on the web ([www.yourfire.com](http://www.yourfire.com)) to share our passion.

Here we collected inspirations, testimonials, practical tips, interviews with experts and news.

We tried to do so in a new way, without going into technicalities, guaranteeing useful information that is engaging and interesting at the same time.

It has been a *brave choice*, rewarded with a constantly growing number of visitors who are increasingly more enthusiastic.

But all of this was not enough. We dreamt of even more enthralling images, ideas that are even more immediate. *We wanted our stories to stay in the homes and hearts of our readers even longer.*

This is why the printed version of YourFire was created. We would like to offer you *just a taste* of it. The full magazine *will be distributed* at our MCZ GROUP outlets *starting next autumn*. With the small and great ambition of spreading the culture and experience of fire to everyone.

Now turn on your fire and enjoy the winter stories that we have prepared for you.

Andrea Brosolo — Marketing Director MCZ Group SPA





Stories#  
*HOME, FIRE*  
*AND WORKSHOP*



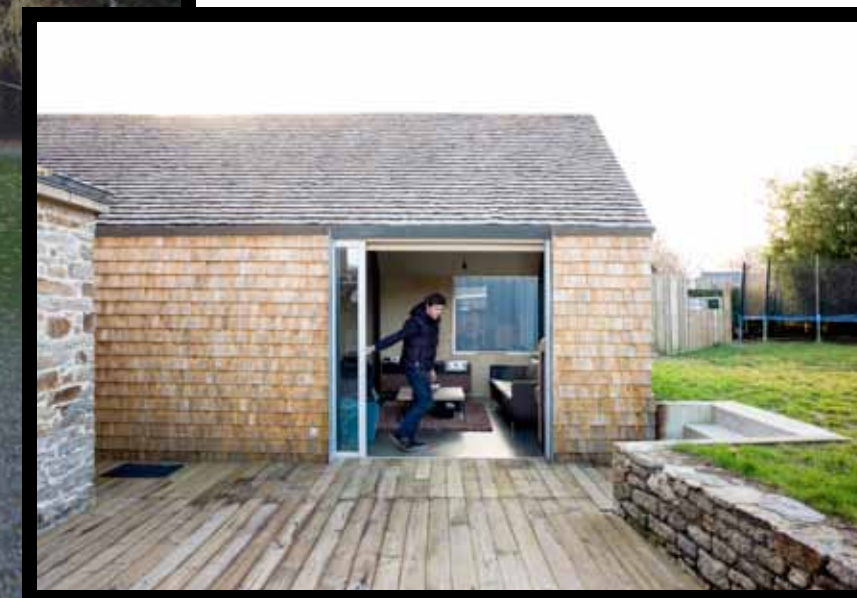
Trends#  
*TIND HOUSE*



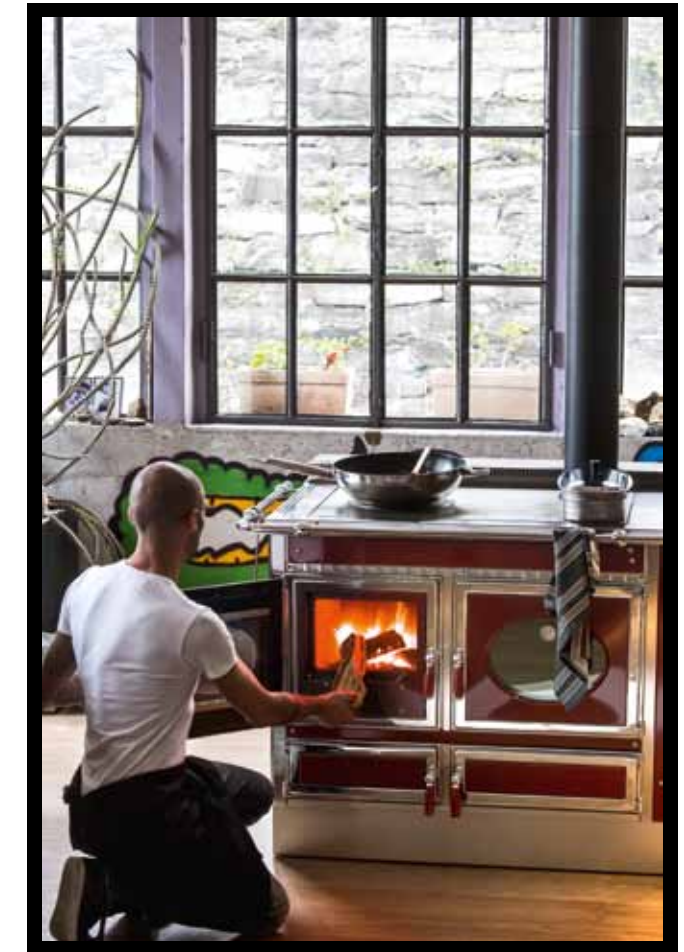
Market#  
*TO EACH*  
*HIS OWN*



Projects#  
*MORE SPACE*  
*FOR THE FAMILY*



Slow cooking#  
*WOOD?*  
*I USE IT*  
*FOR*  
*COOKING*



# WINTER STORIES / PREVIEW

## Contents

- 06 Trends#  
Tind House
- 10 Slow cooking#  
Wood? I use it for cooking
- 16 Projects#  
More space for the family
- 26 Stories#  
Home, fire and workshop
- 28 Market#  
To each his own



#TRENDS

# TIND HOUSE

A new concept  
of high  
energy efficiency  
prefabricated house.

*T*HE TIND HOUSE is a new prefab house by Swedish Claesson Koivisto Rune Architects. Manufactured by Fiskarhedenvillan and provided to clients as a complete building kit.

The prefab/kit house market is traditionally conservative and generally prefers fake historical over contemporary. And it is more than common that an architect has not been involved at all. If this is from neglect on the manufacturers'

side or arrogance from the architects' is difficult to know. What we do know, is that it is time for change.

We have built a house built on a concept built on a set of features. The prefab house needs to be flexible in size and configuration to accommodate individual families' needs and individual locations. So in order to maintain the houses' architectural integrity it is some strong features rather than exact dimensions that are important.

6.





## 1 THE ROOF

The first feature is the roof. The traditional Swedish one-family house has a single-pitch roof. With its pitch angle not as steep as in Germany and not as gentle as in Italy, but in between. The Tind house's roof starts with this typical Swedish pitch. But then the peak is cut off. So that the roof becomes somewhat of a hybrid between single-pitch and flat.

## 2 THE WINDOWS

The second feature is the window niches. First, windows are few, but big, and allocated to the most important walls, rather than many, small and on every wall. Second, every opening, window or door, is flush with the interior. Furthermore the thicknesses of the joists are disguised by bevelling the niche. This allows the house to become a rhythmic composition of wall and void, wall and void. Rather than the usual volume with punched holes.

## 3 THE ALIGNMENT

The third feature is alignment. The division between roof and walls is clear and sharp; like a waistline. Sharp is also the one-side alignment between windows on overlying floors. Every line and every cut aligns with another; with the next.

## 4 THE INTERIOR LAYOUT

The interior layout is generous in spatial flow and efficient in actual flow. The entrance and staircase is at the core. Directly onward lies the communal living, dining and kitchen area. A second, side entranceway goes through a combined storage and wash room. For brushing off your shoes or dog from a muddy walk in the forest before entering the living areas. Bedrooms and bathrooms are either upstairs, downstairs or to the side end of the house. The general ambience is that of outdoor and indoor being connected.



### THE PERFECT STOVE FOR THIS HOUSE? IS CALLED AIKE.

*Aike by MCZ is not only a stove with a Nordic flavour, which would be a perfect union with these Scandinavian temperatures. It is also a stove that works in an "airtight" manner and is therefore ideal for well insulated houses like the Tind House designed by the Claesson Koivisto Rune office.*

*But what does "airtight" mean?  
It means that the stove takes the air required for combustion exclusively from outside. The only exchange that occurs with the rooms in which it is installed is the emission of heat for total comfort at maximum efficiency.*

*Find out more on [www.mcz.it](http://www.mcz.it)*

# A BRIEF INTERVIEW WITH CLAESSON KOIVISTO RUNE



### YF Why a prefab House?

In Sweden more than 75% of private houses are prefabricated. In our culture prefab housing represent high quality living, safe and sustainable solutions. It seems that the pre-fabricated house is going through a period of expansion.

Tind House is a project of a modern house but linked to a traditional language. It's totally customizable to the housing needs of the buyer.

### YF Are you used to suggest fireplaces or stoves in your architecture projects?

Where possible, in our architectural projects we propose the inclusion of a fireplace or stove. The fire is able to create unique living atmosphere.

### YF Is fire present in your everyday life?

For us in the Nordic countries, fireplace is a natural presence, almost necessary. 100 years ago these were poor countries and, at the same time, full of wood: fireplaces or stoves are present in all the houses and, very often, even in the older apartments.

Compared to a few decades ago, the fireplace is returning to be an important element in residential architecture.

### YF What is scandinavian design?

Scandinavian design is part of our culture. Simple, clean, inspired by nature and the northern climate, accessible and available to all.

**TIND IS NORWEGIAN FOR MOUNTAIN PEAK. ONE DIFFERENCE BETWEEN THE SCANDIAN MOUNTAIN RANGE AND MOST OTHER MOUNTAIN RANGES, SUCH AS THE ALPS, IS THE LACK OF SHARP POINTED PEAKS. THIS BECAUSE THE LAST BIG ICE AGE SHAVED THEM OFF WHEN RETRACTING. IN SCANDINAVIA WE FIND OUR MOUNTAINS PARTICULARLY BEAUTIFUL BECAUSE OF THIS FEATURE.**





#SLOW COOKING

12.

# WOOD? I USE IT FOR COOKING.



Let us visit Beppe's loft,  
to rediscover the use of extraordinary cooking tools from long ago.

The aroma of dishes cooked with care. Mediterranean flavours, oregano, basil, bay leaves, expertly mixed with oriental spices, toasted sesame, cardamom. The sense of smell is the most exalted of all on entering Beppe's home. But immediately after, sight takes over, moving between the concrete walls in the large loft, the steel furniture, the tall industrial windows and, especially, the range cooker with central island.

Many friends come and visit. In Beppe's opinion cooking is the best way to maintain bonds over time and to maintain strong roots with his home region, Apulia.

When cooking with wood you must forget the hectic pace of modern life. The fire needs to be cared for and nurtured. *"But not too often"* Beppe explains. *"If you choose a quality product, the*

*embers remain hot for many hours, without requiring continuous refills."* And while the wood burns quietly, you have some of the most extraordinary cooking tools available - for free - which have their roots forged in the history of mankind.

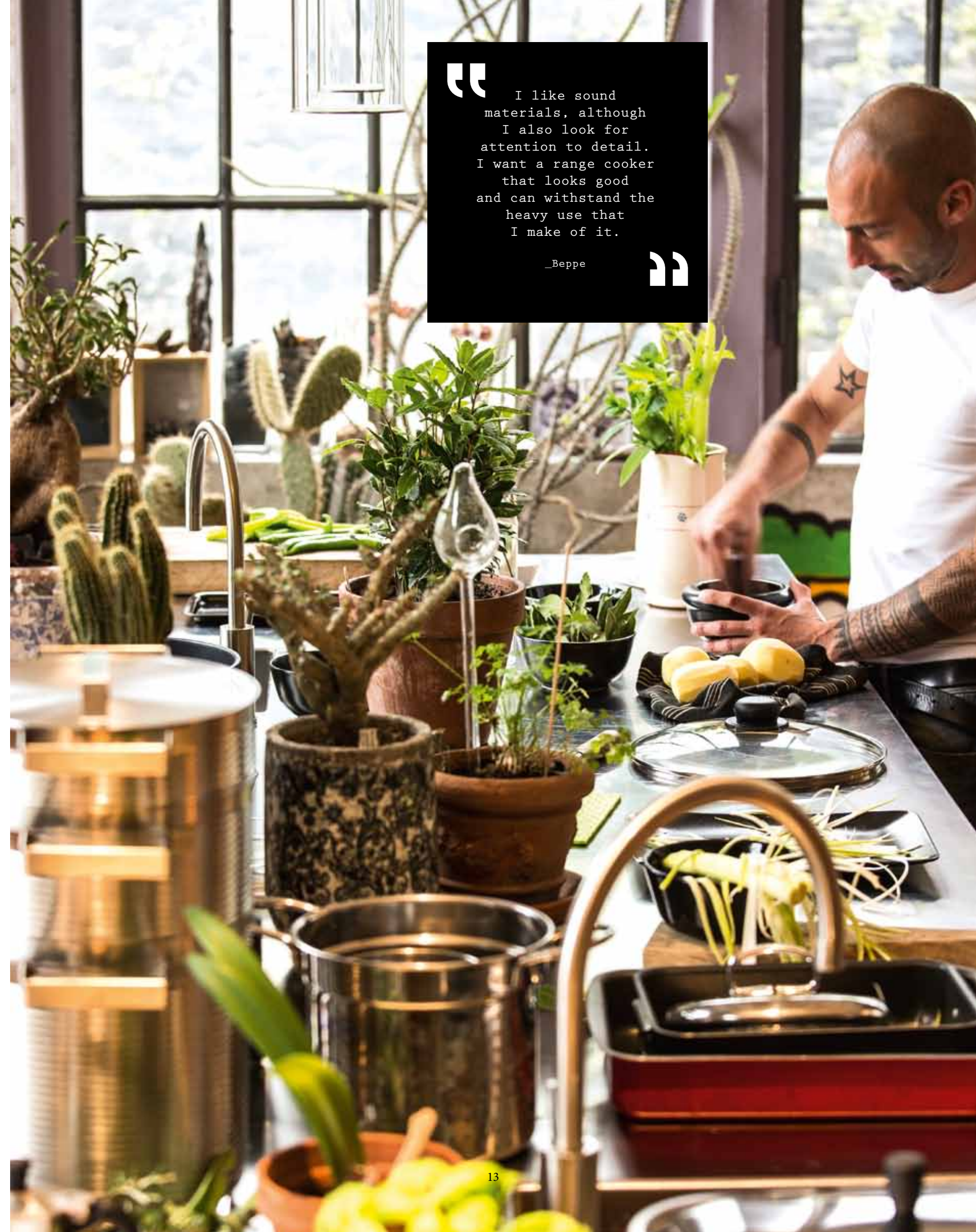
Firstly the oven, which can reach very high temperatures when there is a lot of wood in the brazier, or on the contrary can maintain low, constant temperatures for many hours. The high temperatures, up to 200 – 250 °C, are perfect for traditional pizzas and focaccia, which are always a big hit with Beppe's friends. Low, constant temperatures are instead ideal for vegetables. *"You do not need very much"*, says Beppe. *"Salt and pepper, a sprinkle of herbs, a drizzle of oil. Then I leave the dish in the oven and forget about it, sometimes even for the whole*

*night, with the embers very slowly going out. Peppers, tomatoes and onions become sweet, incredibly soft, with unparalleled flavours."*

The second tool is the cast iron plate, placed just above the brazier. The hottest part is on the rings, in direct contact with the flame. It is perfect for browning or fast-searing. The sides, however, provide diffused heat, perfect for slow-cooking, such as that required for a risotto, braising and all types of sauce.

Last but not least, the brazier itself. *"Cooking under the ashes is an ancient technique, providing authentic delicacies"* concludes Beppe. Again in this case, all haste is banished.

“ I like sound materials, although I also look for attention to detail. I want a range cooker that looks good and can withstand the heavy use that I make of it. ”  
\_Beppe





“

Wood-burning cooking is fantastic to enhance the flavours of traditional cuisine, but also to attempt bolder culinary experiments.

It is a type of cooking that respects the raw materials, it preserves vitamins, nutrients and mineral salts.

\_Beppe

”

14.



“

We must have the patience of our ancestors, experiment, wait. In the end you will be rewarded with an explosion of flavours, which will delight even the most modern taste buds.

”

\_Beppe



Find out more at [www.jcorradi.com](http://www.jcorradi.com)

## STUFFED PEPPERS COOKED IN A WOOD-BURNING OVEN

INGREDIENTS for 4 people:

4 green and red peppers  
A slice of country bread  
1 egg  
200g minced veal  
Bay leaves  
1 garlic clove  
1/2 an onion  
Parsley  
Sesame seeds  
Salt, pepper and extra virgin olive oil as required



Time: 1 hour



Difficulty: easy

Cut the upper cap of the peppers and sprinkle with salt on the inside. Chop the garlic, onion and parsley. In a large bowl mix the bread soaked in milk with the meat, chopped parsley, pieces of pepper left from the caps and some good olive oil. Add the egg, salt and pepper and mix. Fill the peppers with the two-thirds of the mixture and lay in a baking dish. Lay one or two bay leaves on each pepper, sprinkle with sesame seeds and add a sprinkle of oil. Add a glass of water or vegetable stock to the cooking liquid place the baking dish in the wood oven. Cook with low heat for about 40 minutes.



# MORE SPACE FOR THE FAMILY



The project started from the need to extend an early twentieth century house in Vigneux de Bretagne, without any special features, apart from the solid granite walls, typical of Breton tradition. The architect Tristan Brisard chose not to force the similarities with the old house, but rather to create a stylistic liason with an aesthetically autonomous volume, based on the archetype of the house, the icon typically drawn by children. A particularly good

choice, which led to the creation of a sort of conservatory, basic and minimalist, a with “cathedral”-like volume, made entirely according to the principles of green building.

With the primary objective of maintaining a low environmental impact in terms of CO2 emissions, energy consumption and use of raw materials, the natural choice was to create a building made entirely of wood.

The environmental sustainability objective was also achieved thanks to pellet heating, chosen as a more environmentally friendly and cost effective alternative than diesel or natural gas, but also more practical than wood.





18.

The owners Julien and Fanny Guérin chose the Thema stove by MCZ. With this little forced ventilation stove, which is just 80 centimetres tall, they are able to easily heat the entire room (over 70 square metres), while constantly maintaining 20°C during the day and 18°C at night, with limited consumption (less than one tonne of pellets throughout the winter).

“Thema has many positive aspects. Heating is instantaneous. The flame is stunning, even compared to other pellet stoves on the market. The temperature is controlled perfectly and easily. In addition, cleaning is fast and the pellets are added from the door at the top, easily and with no mess.

\_Fanny Guérin

”



## THEMA the reason for the choice

### MINIMAL APPEARANCE

Thema has sleek but graceful and feminine lines at the same time. This is because it does not have sharp edges, but only pleasing curves and rounded edges.

### MINIMUM SIZE

This model measures just 80 cm and the connection to the flue is from the top. An easy solution that even further reduces size (the stove can be placed against the wall).

### WIDE FLAME

In this small pellet stove what matters most is the flame. It is wide and pleasant, like a wood fire, thanks to a special stretched brazier.

### SILENT OPERATION

Simply press a button to turn off the fan. Thema continues to spread heat by natural convection, in complete silence, without overheating.



# THE BUILDING SITE

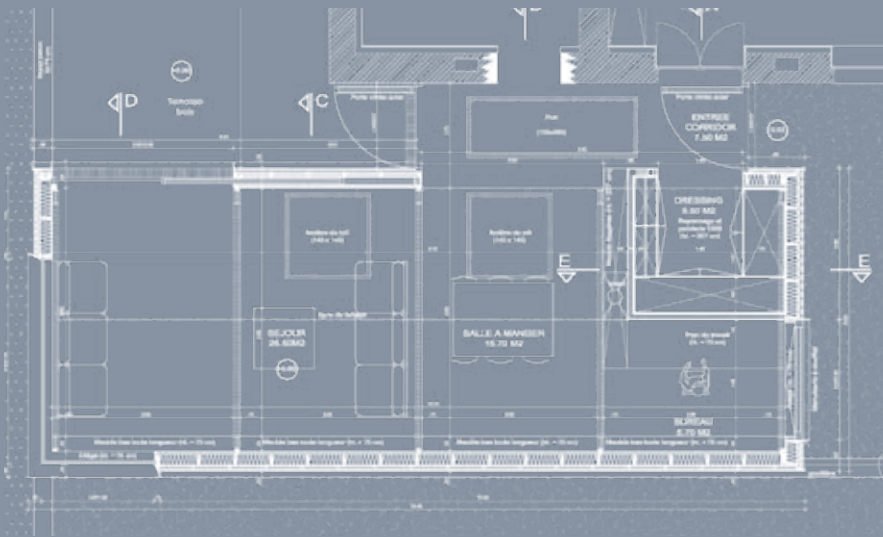


## TRISTAN BRISARD Architecte

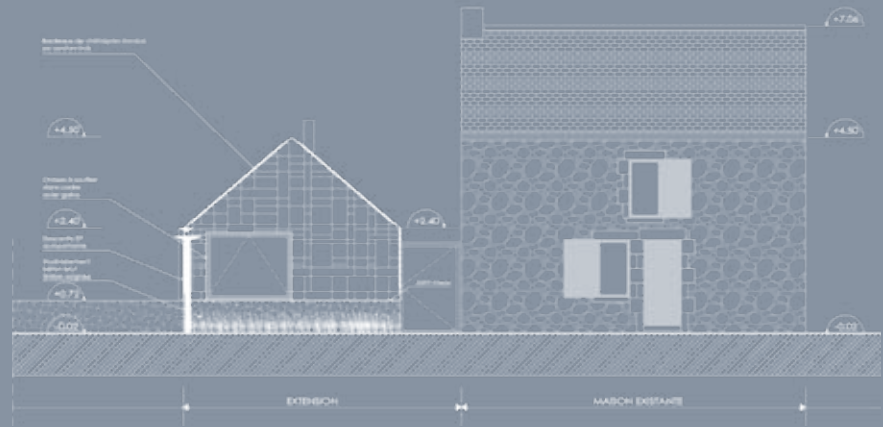
The studio of the architect Tristan Brisard was founded in 2009 in Nantes and is involved in residential and public building projects.

Expert in the green building and environmental sustainability field, this is how architect Brisard introduces himself:

“The heart of the work of an architect is to arrive at a diagnosis. **The designer must forget everything**, avoid dogmatism, open the senses, without preconceptions. This is the way it is meant to be. The numerous standards and standardised approaches required for building, full of good intentions, must however consider the context and its specificity. **How well a place will be experienced is a unquantifiable concept** which involves subjective notions in which the poetry of perceived space, where the “void”, takes the space of “full” or “built”. My work deals with projects with very different sizes and issues. I find that this diversity of approaches is the essence of the architectural profession, which is what makes it interesting. **To escape from any habit allows me to occupy a privileged position to ask the right questions.**”



Floor plan



Front elevation

Architect Tristan Brisard has created for the Guerin family a sort of delightful winter garden, completely environmentally friendly, heated by a single little pellet stove.



**ARE YOU AN ARCHITECT  
AND YOU NEED SUPPORT  
TO DESIGN A FIREPLACE?  
MCZ WILL TAKE CARE OF IT.**

MCZ has set up an ad-hoc service for demanding and expert partners such as architects: dedicated consultants follow all the design stages with targeted advice and customised technical solutions.  
For info:  
<http://www.mcz.it/en/service/architects-area/>



#STORIES

# HOME, FIRE AND WORKSHOP.

Francesca Mellarè,  
owner of Italianadivani,  
tells us how the fireplace  
can create a sense of home  
even into the workplace.

For Alida, my mother, **there's no home without fireplace.** The smell of burning wood, the crackling and the creaking of logs, the hypnotic and enveloping light that dances in the fireplace are part of her oldest memories, shrouded in nostalgia.

It is in front of the fire that today, in Italianadivani, we develop the tailored jackets of our upholstered furniture. My mother wanted a craft masonry stove to heat our workshop and give it that sense of home that still characterises it today.

In our area, the industrious Italian North-East made of small and micro-enterprises, the binomial **"house and workshop"** has **ancient roots.** My grandfather's factory was just an extension of his home. The craftsmanship required long hours of work, even and especially by the owners, who worked hard, side by side with their employees.

In Italianadivani we kept this artisanal dimension where everyone matters, where everyone likes to have his/her say on everything. **We discuss right here, beside the stove.**



“

We discuss  
right here,  
beside  
the stove

\_Francesca Mellarè

”



[www.yourfire.com](http://www.yourfire.com)

22.



WITH A VINTAGE FLAVOUR,  
SLEEK AND STREAMLINED, THE  
METROPOLE CAPITONNÉ SOFA  
IS FRANCESCA'S FAVOURITE  
MODEL: "THE VISIBLE SEAMS  
AND THE ANCIENT CAPITONNÉ  
TECHNIQUE ALLOW TAKING  
ADVANTAGE OF ALL THE  
FEATURES OF OUR SARTORIAL  
EXPERTISE."

23





*Fishing from wads of 100% Italian, carefully selected suppliers, Francesca loves to create samples of matching fabrics, mixing colours, textures, finishes, to create different flavours and atmospheres and help in the selection.*

24.



One time it's about creating a collection with matching fabrics. Massimiliano would like to follow the latest trends of the Salone del Mobile, while Carla pushes towards Nordic timeless nuances. Another time we must analyse the custom project that an architect sent us from the other side of the Mediterranean. Luca, as usual, argues that time is tight, if we want to do a job to perfection. Marco protests against the couches designed thinking only to aesthetics, neglecting the comfort. Raffaella, intrigued by the challenge, already has the nose plunged into the fabrics.

In the end we always find the solution.


Who knows, maybe it is this warmth, this natural flame that helps us to renew every day our creativity and to satisfy even the most demanding customer.

It is an "ecological" heat that is accompanying us also on our latest challenge. Thanks to Carla, the creative with the "green" vein, we guessed what a wonderful second life hides behind old pieces of fabric, forgotten buttons, Grandma's chairs that customers send us to re-upholster. With Carla we founded the brand Biancospino, a laboratory for creative reuse that is hosted right here in the Company. Always beside the fire.

**biancospino**



*Right next to the Italianadivani tailor workshop, in the "Biancospino" workshop created by Francesca and Carla, brooches, earrings, rings and necklaces are created with trimmings, antique fabrics, brass knobs. Pieces of modernism or antique chairs are repainted and re-upholstered, to create entirely new ornaments.*

 [biancospino\\_riusocreativo](https://www.instagram.com/biancospino_riusocreativo)  
[www.italianadivani.it](http://www.italianadivani.it)



# TO EACH HIS OWN

## SIX CHARACTERS IN SEARCH OF A STOVE OR A FIREPLACE. CAN YOU HELP THEM FIND THE MODEL THAT SUITS THEM BETTER?



1

### KLAUS AND LISA

Utrecht, The Netherlands.

"This is our first home. We really want to make it as independent as possible from fossil energy sources, because we are oriented to eco-conscious choices since a few years. It is no coincidence if we move only by bike!"



2

### SIMON AND MAGGIE

Montalcino, Italy.

"Renovating an old farmhouse in Tuscany was our dream. Now we would like to spend here as much time as possible, even in winter. We must find an alternative to the old chimney, a heating solution that is more efficient, but still pleasant."



3

### DANIEL AND MARTINA

Bregenz, Austria.

"We chose to live and work away from the noise of the city. The creativity of the projects has improved, but it is important that our studio and the whole house are warm and welcoming, as we spend here almost the whole day."



4

### HIROAKI

Tokyo, Japan.

"I am fortunate to live in a large apartment, a luxury here. Warming it up as usual with an electric heat pump is costing me a fortune. So I'm looking for an alternative, which also produces hot water."



5

### FULVIO

Trento, Italy.

"I furnished my bistrot trying to keep the retro flavour that it used to have. I chose a Viennese liberty, starting from the central bar, up to the doors, floors, chairs. I'm desperately looking for a heater that does not disfigure the place, but also that can really heat."



6

### SYLVIE

Avignone, France.

"I love the cuisinières, they remind me of my childhood, when we spent hours in the kitchen in front of the fire. Unfortunately I only find somewhat antiquated style models, that would clash tremendously with the essential taste that my husband and I chose."



# THE SOLUTIONS

A solution for every need

When speaking of fire,  
it's best to play safe.  
Choosing MCZ means finding a  
full range with de facto all fire  
applications.

From air or hydro stoves to  
fireplaces, barbecues, wood-  
burning range cookers, with its  
various brands MCZ Group covers  
any kind of need, with products  
that always ensure  
top quality in terms of materials,  
performance and environmental  
certifications.

[www.mczgroup.com](http://www.mczgroup.com)

1

PELLET BOILER  
PAIRED WITH  
A SOLAR PANEL  
AND A PUFFER "TANK IN TANK"

RED COMPACT 14



Complete independence, 365 days a year, has finally been reached. Heating is provided by the 14 kW pellet boiler, perfect for a small home, while the water heating is guaranteed in summer by the solar panel and in winter by the boiler+puffer combination.

2

WOOD-BURNING  
FIREPLACE INSERT

MCZ BOXTHERM WOOD 70



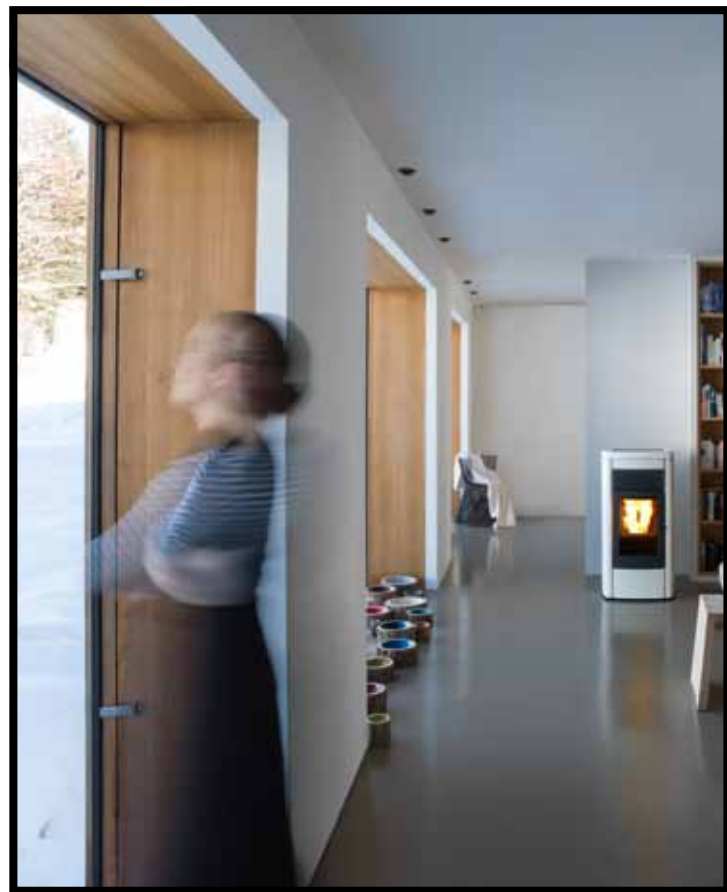
In the old fireplace, that consumed too much and did not heat enough, a wood-burning insert has been installed. The aesthetic is saved, thanks to the large glass which provides a perfect view of the flame. But above all, thanks to great performance and efficiency, the salon really heats up.



3

### DUCTED PELLET STOVE

MCZ STAR 2.0 COMFORT AIR

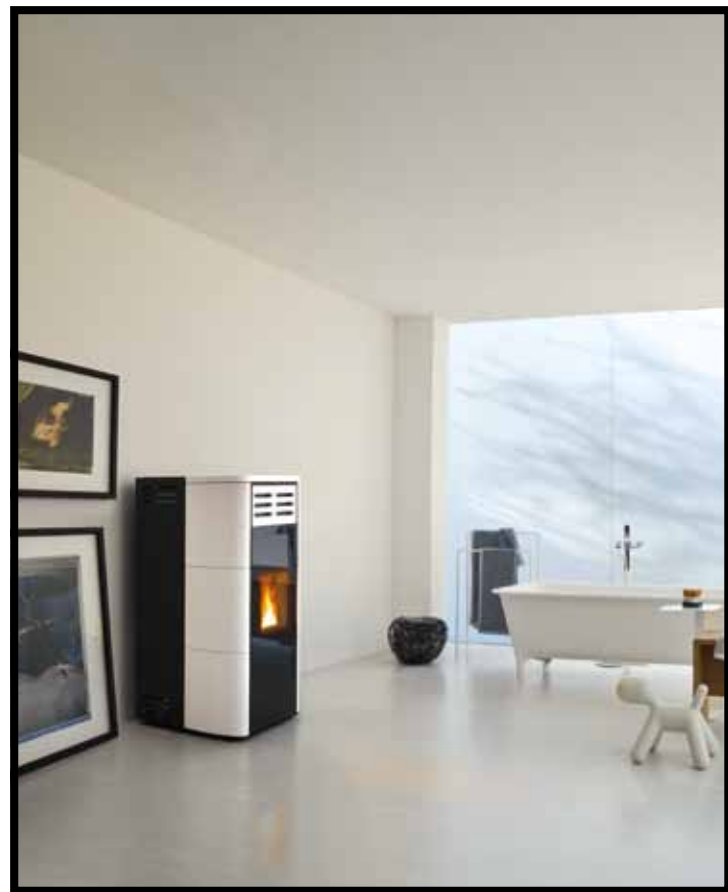


**T**wo ducts start from the stove, installed in the living room. One carries the warm air upstairs in the upper floor, the other goes to the open space used as a studio. Each duct can be independently managed to reduce consumption and heat only where you need it.

4

### HYDRO PELLET STOVE

MCZ SWING HYDRO



**I**t's a pellet stove, which blends in the most elegant rooms, but at the same time provides the performance of a boiler. Within minutes it can heat all the radiators and supply the hot water needed for the bathroom or kitchen. It can easily be managed with a retractable control panel, assembled on top.

5

### WOOD-BURNING CERAMIC STOVE

SERGIO LEONI MATILDE DI CANOSSA



**I**t is a ceramic heater, entirely handmade, with small dimensions and sinuous curves, reminiscent of antique dresses. Thanks to the refractory properties of ceramics and the careful study of the fireplace, it heats effectively for long hours without the need for continuous wood refills.

6

### COMBINED PELLET RANGE COOKER

J.CORRADI NEOS 155 PGE



**M**ade entirely in stainless steel, this cuisine combines the ancient wood-burning cooking techniques with hyper-modern aesthetics. In addition to cooking, it heats effectively also fairly broad environments, through forced ventilation. Switching on and off can be programmed as needed.



**Would you like to see the stove directly at home?**



AD : GENNY CANTON STUDIO

**BOOK A FREE TECHNICAL VISIT, THERE ARE MORE THAN 100 MODELS YOU CAN CHOOSE. WITH THE NEW MCZ@HOME APP YOU'LL BE ABLE TO SEE THE REAL SIZE AND ALL AVAILABLE FINISHES DIRECTLY AT HOME. [WWW.MCZ.IT](http://WWW.MCZ.IT)**

**MCZ**